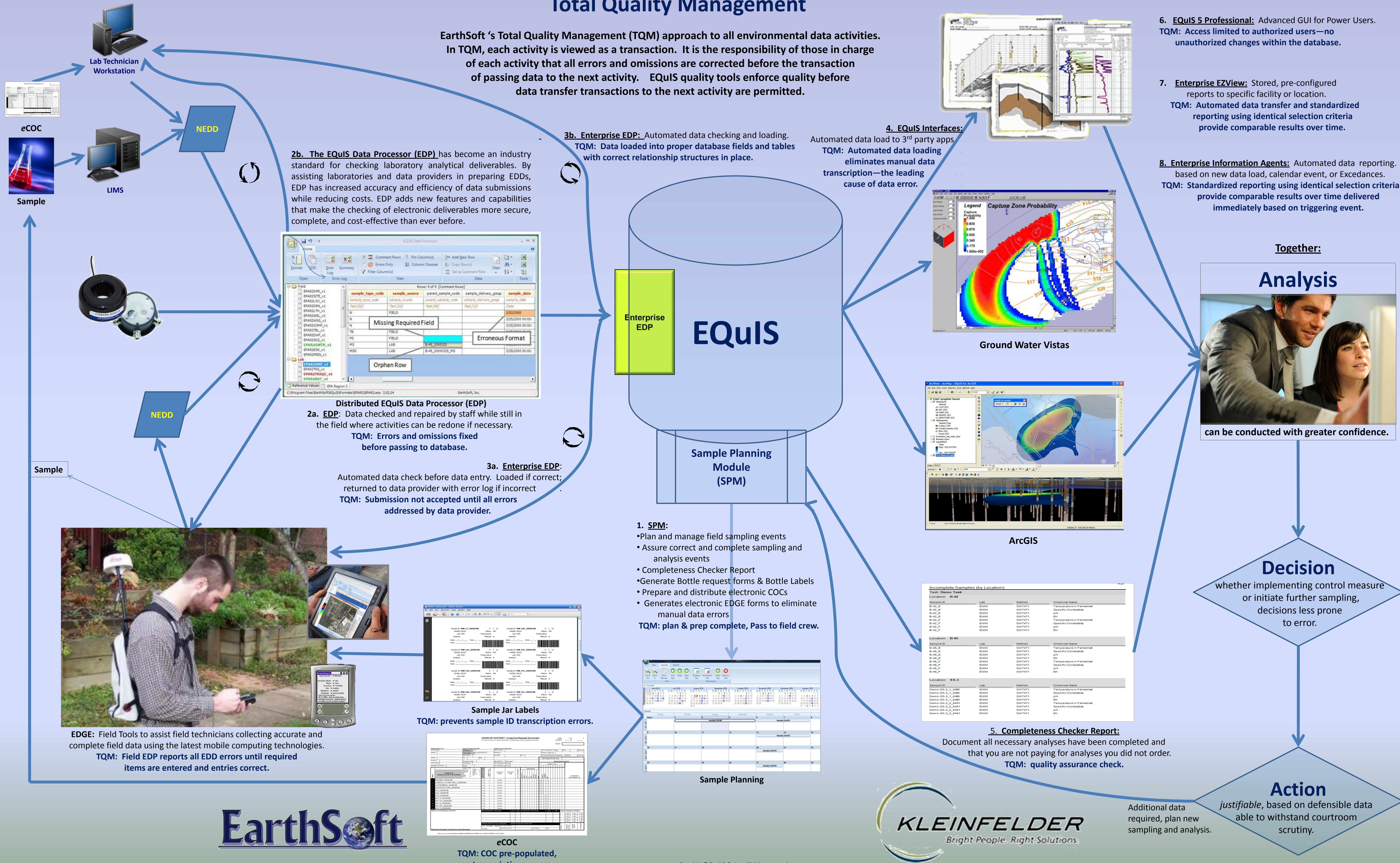


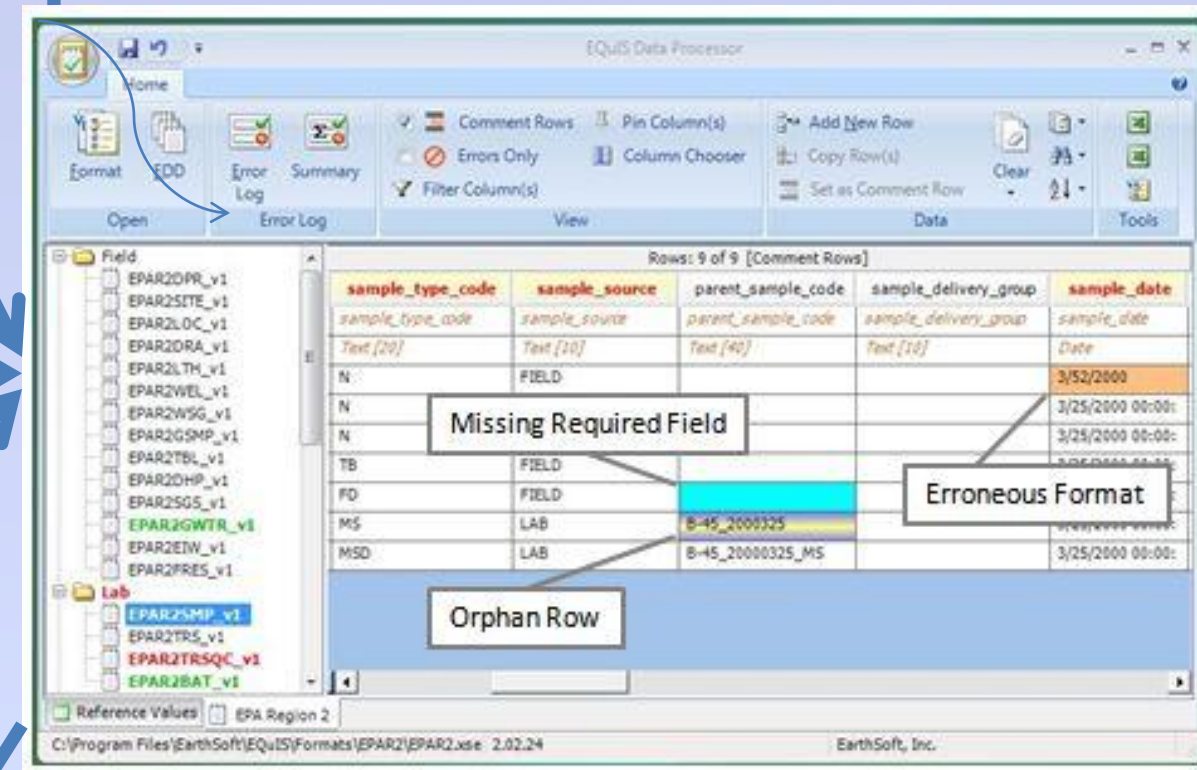
Kleinfelder uses EQuIS to Implement TQM Principles for Navy Remedial Investigations

Total Quality Management

EarthSoft's Total Quality Management (TQM) approach to all environmental data activities. In TQM, each activity is viewed as a transaction. It is the responsibility of those in charge of passing data to the next activity. EQuIS quality tools enforce quality before data transfer transactions to the next activity are permitted.



2b. The EQuIS Data Processor (EDP) has become an industry standard for checking laboratory analytical deliverables. By assisting laboratories and data providers in preparing EDDs, EDP has increased accuracy and efficiency of data submissions while reducing costs. EDP adds new features and capabilities that make the checking of electronic deliverables more secure, complete, and cost-effective than ever before.

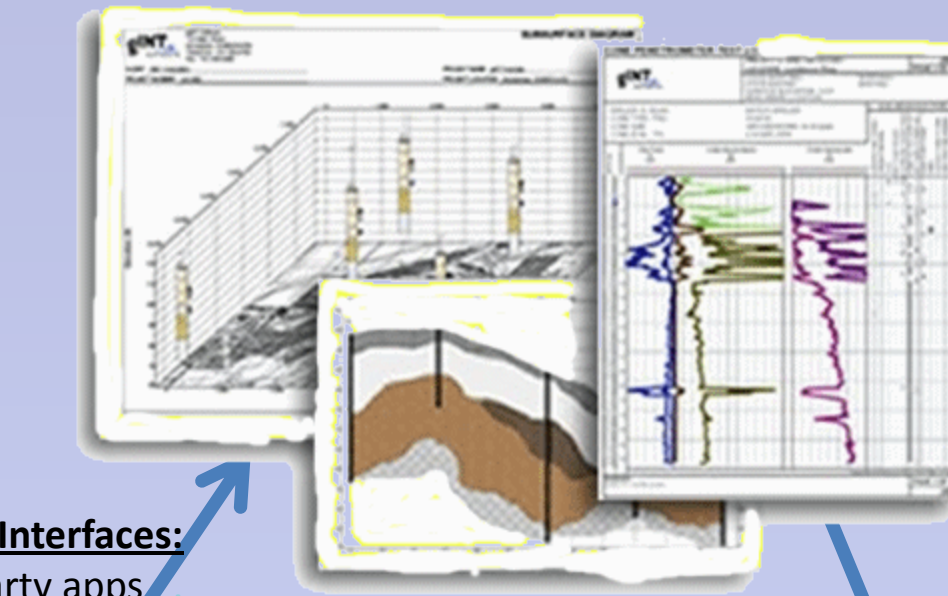


Distributed EQuIS Data Processor (EDP)
2a. EDP: Data checked and repaired by staff while still in the field where activities can be redone if necessary.
TQM: Errors and omissions fixed before passing to database.

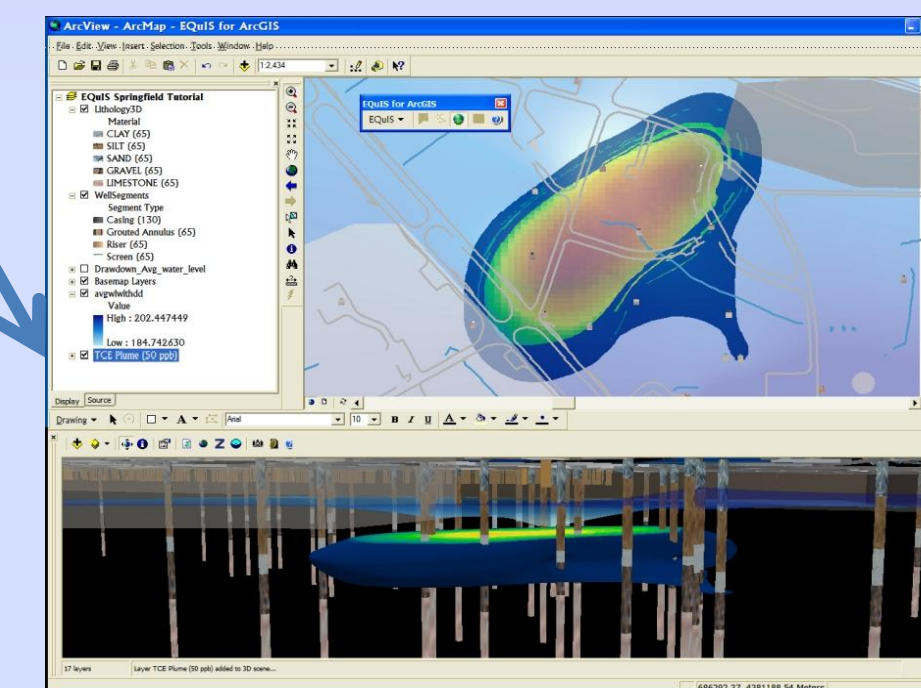
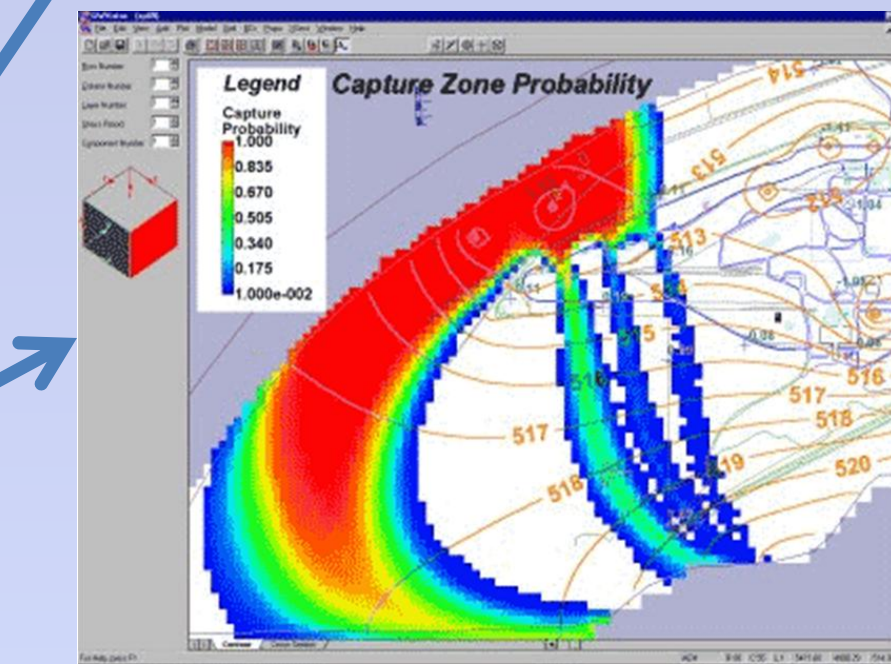
3a. Enterprise EDP:
 Automated data check before data entry. Loaded if correct; returned to data provider with error log if incorrect
TQM: Submission not accepted until all errors addressed by data provider.

3b. Enterprise EDP: Automated data checking and loading.
TQM: Data loaded into proper database fields and tables with correct relationship structures in place.

4. EQuIS Interfaces:
 Automated data load to 3rd party apps
TQM: Automated data loading eliminates manual data transcription—the leading cause of data error.



Ground Water Vistas



ArcGIS

Sample ID	Lab	Method	Chemical Name
Location: B-42			
B-42_1	ENR	SW721	Temperature in Fahrenheit
B-42_2	ENR	SW721	pH
B-42_3	ENR	SW721	Specific Conductivity
B-42_4	ENR	SW721	Temperature in Fahrenheit
B-42_5	ENR	SW721	Specific Conductivity
B-42_6	ENR	SW721	pH
B-42_7	ENR	SW721	Temperature in Fahrenheit
B-42_8	ENR	SW721	Specific Conductivity
B-42_9	ENR	SW721	pH
Location: B-45			
B-45_1	ENR	SW721	Temperature in Fahrenheit
B-45_2	ENR	SW721	pH
B-45_3	ENR	SW721	Specific Conductivity
B-45_4	ENR	SW721	Temperature in Fahrenheit
B-45_5	ENR	SW721	Specific Conductivity
B-45_6	ENR	SW721	pH
B-45_7	ENR	SW721	Temperature in Fahrenheit
B-45_8	ENR	SW721	Specific Conductivity
B-45_9	ENR	SW721	pH
Location: S-3			
Demo-S-3_1_2480	ENR	SW721	Temperature in Fahrenheit
Demo-S-3_2_2480	ENR	SW721	Specific Conductivity
Demo-S-3_3_2480	ENR	SW721	pH
Demo-S-3_4_2480	ENR	SW721	Temperature in Fahrenheit
Demo-S-3_5_2481	ENR	SW721	Specific Conductivity
Demo-S-3_6_2481	ENR	SW721	pH
Demo-S-3_7_2481	ENR	SW721	Temperature in Fahrenheit
Demo-S-3_8_2481	ENR	SW721	Specific Conductivity
Demo-S-3_9_2481	ENR	SW721	pH

5. Completeness Checker Report:
 Document all necessary analyses have been completed and that you are not paying for analyses you did not order.
TQM: quality assurance check.

6. EQuIS 5 Professional: Advanced GUI for Power Users.
TQM: Access limited to authorized users—no unauthorized changes within the database.

7. Enterprise EZView: Stored, pre-configured reports to specific facility or location.
TQM: Automated data transfer and standardized reporting using identical selection criteria provide comparable results over time.

8. Enterprise Information Agents: Automated data reporting based on new data load, calendar event, or Excedances.
TQM: Standardized reporting using identical selection criteria provide comparable results over time delivered immediately based on triggering event.



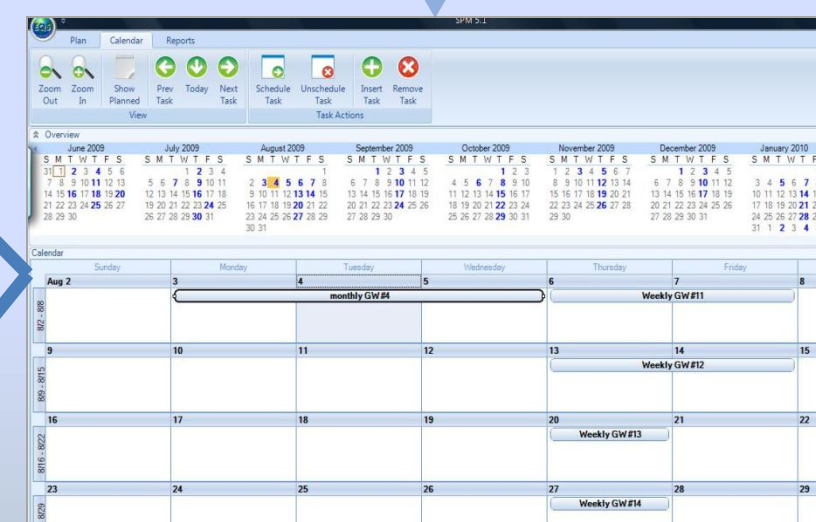
Decision
 whether implementing control measure or initiate further sampling, decisions less prone to error.

Action
 justifiable, based on defensible data able to withstand courtroom scrutiny.

Additional data required, plan new sampling and analysis.

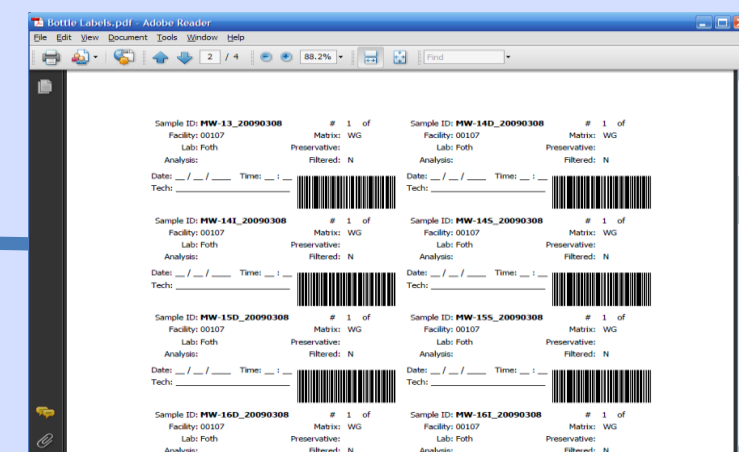


eCOC
TQM: COC pre-populated, no transcriptions errors.

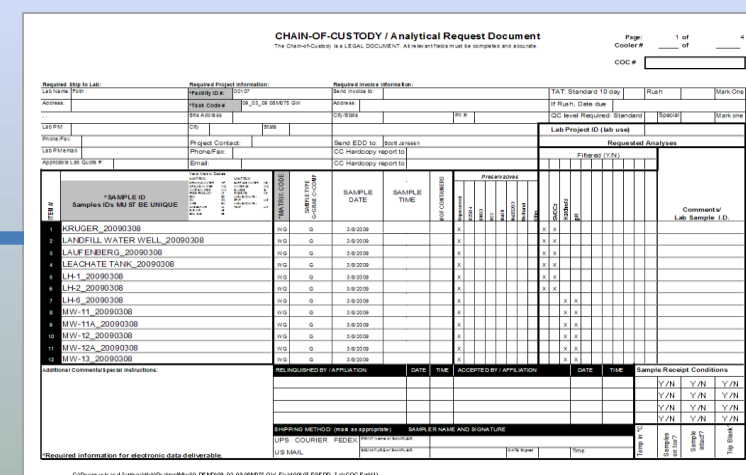


Sample Planning

1. SPM:
 • Plan and manage field sampling events
 • Assure correct and complete sampling and analysis events
 • Completeness Checker Report
 • Generate Bottle request forms & Bottle Labels
 • Prepare and distribute electronic COCs
 • Generates electronic EDGE forms to eliminate manual data errors
TQM: plan & prep complete, Pass to field crew.



Sample Jar Labels
TQM: prevents sample ID transcription errors.



eCOC
TQM: COC pre-populated, no transcriptions errors.

