

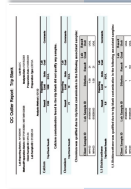
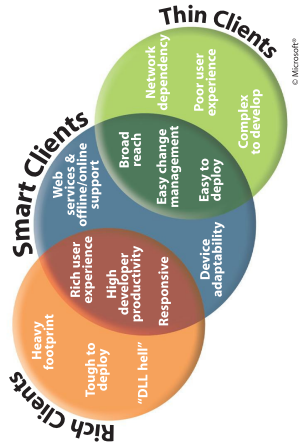
THE MOST WIDELY USED ENVIRONMENTAL DATA MANAGEMENT SOFTWARE IN THE WORLD

ELECTRONIC DATA DELIVERABLES (EDDs)

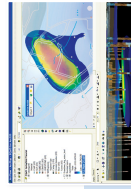
EQUS Data Processor (EDP) is the most widely used system in the world for EDD management. EDP and EQUS EDDs are written into many contracts as standard operating procedure. Checks for correctness and completeness guarantee known data quality. EDP is so powerful and flexible, it is used by many US state and EPA environmental enforcement agencies.

Automated Data Review (ADR) is the world's most advanced software tool for analytical data validation support and is used extensively by the US Army Corps of Engineers and US EPA.

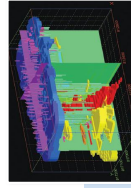
Supported EDDs include SEDD, GeoTracker, HazSite, NEDD, and any other EDD format. EQUS additionally supports geological, geotechnical, limnology and other EDDs not found elsewhere.



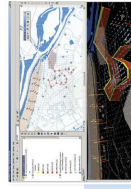
ADR



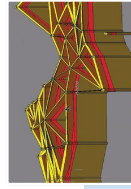
EQUS plume in ArcGIS with EQUS for ArcGIS 3D Viewer



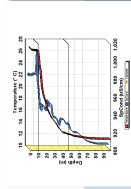
EVS



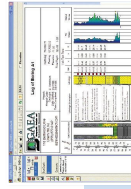
RockWorks



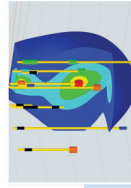
GMS



LakeWatch

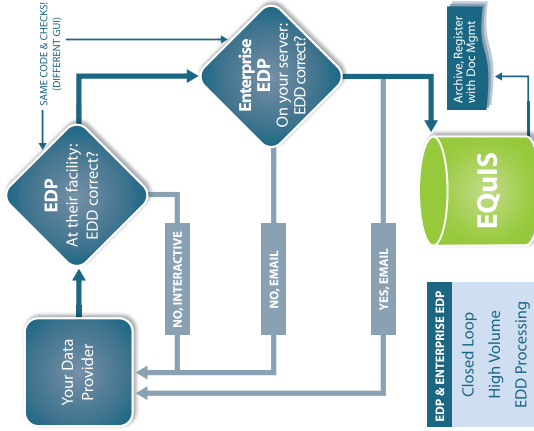


LogPlot



EnviroInsite

ENVIRONMENTAL DATA WORKFLOW AUTOMATION



WINDOWS + WEB = WORKFLOW AUTOMATION.

EDP provides you and your subcontractors with advanced software tools. Many consultants provide either a desktop tool or a web tool, but only EDP provides both. This double feedback loop provides checked secure EDD submissions and automated migration into EQUS databases.

Professional	<p>Analysis: highly integrated with popular modeling and analysis applications (GMS, RockWorks, LogPlot, EVS, Surfer, etc.)</p> <p>GIS: powerful interface with ESRI ArcGIS 9.x, in addition to lightweight embedded map tools</p> <p>Reports: rich user interface with powerful reporting tools for adhoc graphs, tabular and crosstab reports, etc</p> <p>EDP: rich user interface application for checking and importing EDDs</p> <p>RUNS ON WORKSTATION Licensed by workstation or concurrent users.</p>
EQUS	<p>Schema: industry leading database for environmental data management. Simple enough for a single facility, yet scalable to thousands of facilities.</p> <p>RUNS ON SERVER Licensed by server processor(s) or user CALS.</p>
Enterprise	<p>EDP: automatically receive (FTP, email, or web upload) and process EDDs and send acceptance and/or rejection notifications</p> <p>EZView: web interface standard reports and GIS</p> <p>EIA: Environmental Information Agents watch incoming data and automatically send reports (new data, exceedances, scheduled graphs, etc.)</p> <p>RUNS ON SERVER Licensed by server processor(s) or user CALS.</p>

DECISION SUPPORT

Scientists do more science: EQUS provides interfaces to many graphics solutions, both directly and from ArcGIS 9.X, including:

- EVS
- LogPlot
- RockWorks
- EnviroInsite
- GMS

EQUS amplifies environmental visualization and modeling skills.

BUILD – SERVE – PUSH GRAPHICS AND REPORTS

EarthSoft has development, marketing and Help Desk relationships with many system providers for continued innovation and support for these advanced 'Power User' modules. Saved exports can then be served via the web with EQUS Enterprise or 'pushed' via email to 'Casual Users'.

OVER 200 CONSULTANTS ALREADY USE EQUS.