

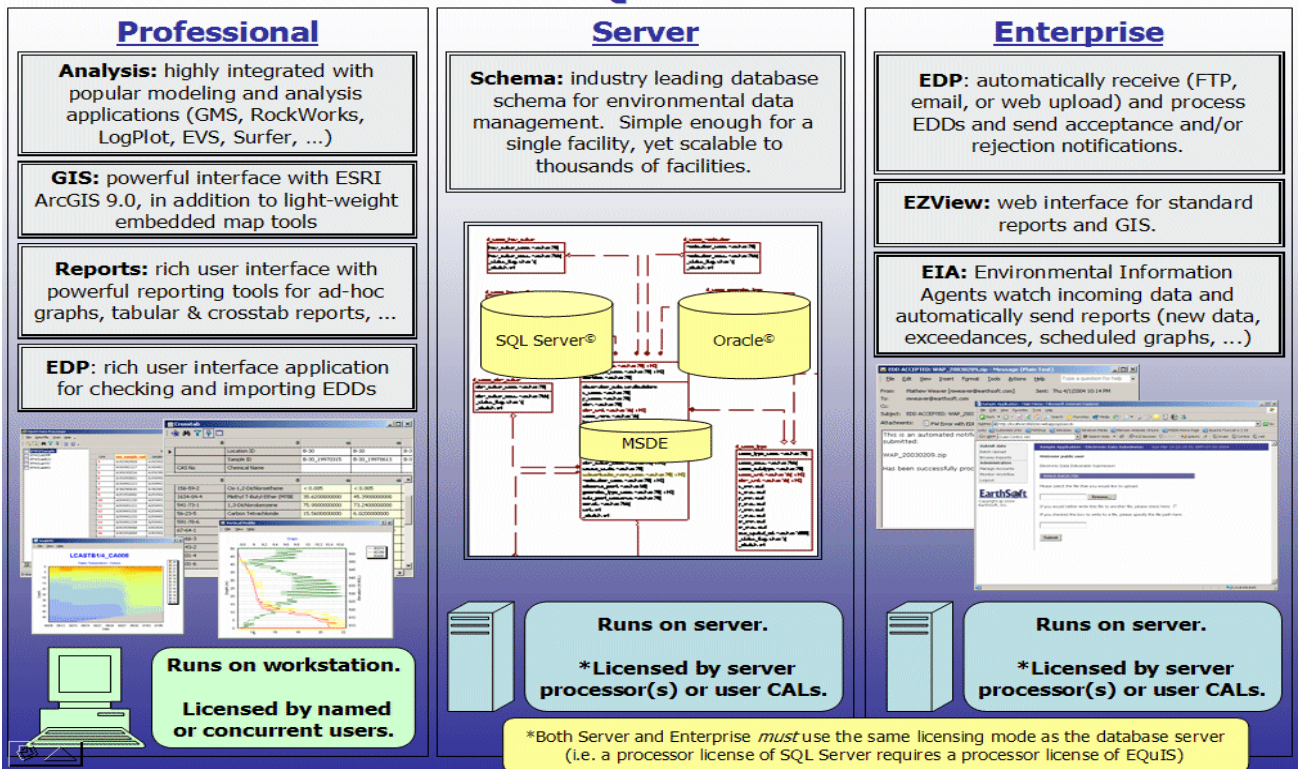
Professional & Enterprise from EarthSoft

EQUIS[®] 5

The Complete .NET Web-Enabled Sample Data Management Solution

More people use EQUIS around the world than any other commercial system and over 100,000 facilities have data in EQUIS. EQUIS users include several EPA Regions, more than a dozen states, some of the largest industrial clients in the world, and most of the top consultants and labs. Now EarthSoft has released the next product in the EQUIS family, EQUIS 5. EQUIS 5 was written in the Microsoft .NET Framework and is available in MSDE, SQL Server, or Oracle databases. VB.NET, C#, and Java are used to deliver a rich user interface to your browser or desktop. EQUIS 5 is simple enough to be used on small projects, yet is scalable to support the largest of requirements. Workflow Automation modules in EQUIS 5 support large operations managing thousands of data submissions and hundreds of project managers. EQUIS 5 integrates with Microsoft SharePoint enabling the data management operation to also manage all received and produced documents.

EQUIS 5



EQUIS 5 Server (Industry-leading database schema)

- One database for both Professional and Enterprise
 - Scalable to thousands of facilities
- Database combines Chemistry, Geology, Limnology, DMR and Geotechnical data types
 - Oracle, SQL Server, or MSDE

EQUIS 5 Professional (Smart client)

- Includes EDP to check and load EDDs
 - Reports: Create graphs, tabular and crosstab reports, as well as formatted print-ready reports.
- Analysis: Export to popular modeling and analysis applications (GMS, RockWorks, LogPlot, Surfer, more to come...)
- GIS: Map, visualize, and analyze with ESRI's ArcGIS 9.0, in addition to lightweight embedded map tools.

EQUIS 5 Enterprise (Thin client access to data)

- EDP: Automated Workflow receives (via ftp, email, or web) and processes EDDs; automatically sends acceptance and/or rejection notifications
 - Reports: Web interface for standard reports and GIS
- Environmental Information Agent (EIA) Workflow Automation: EQUIS Information Agent watches incoming data and automatically sends reports (new data, exceedances, scheduled graphs, etc.)

EQuIS 5 Power on the Desktop

EQuIS Professional

is a **Smart Client** edition of EQuIS 5 for 'Power Users'. Crosstab reports, a variety of exports to third party graphics, statistics, and analytical tools and a powerful reporting/graphics engine make EQuIS 5 Professional the tool of choice for users demanding advanced capabilities. Advanced data mining capability is included. EQuIS Professional is available in MSDE for standalone, inexpensive deployment.

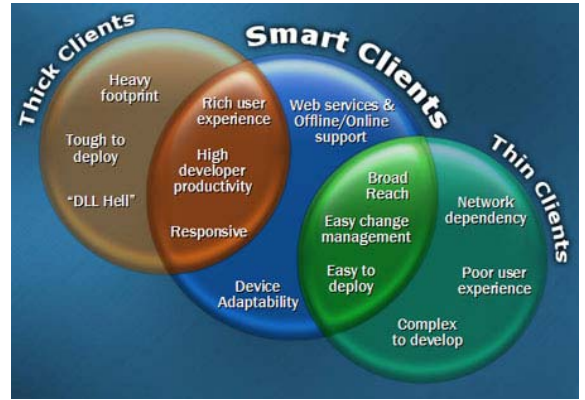


Table	Line	Column	Value	Message	Type
RUSS	7	pH	2.27	Value does not match specified precision	ERROR
RUSS	11	pH	[NULL]	Missing required field	ERROR
RUSS	16	pH	2.27	Out of Range	ERROR
RUSS	20	pH	N/A	Invalid data type	ERROR
RUSS	600	pH	[NULL]	Missing required field	ERROR
RUSS	603	pH	2.15	Value does not match specified precision	ERROR
RUSS	607	pH	2.15	Out of Range	ERROR
RUSS	611	pH	N/A	Invalid data type	ERROR

EQuIS Data Processor(EDP)

is both the import module to EQuIS 5 and is a detached, standalone data checker for your lab or field data providers. Over 100 labs around the world already have this tool or its predecessor from EarthSoft to check their Electronic Data Deliverables (EDDs). Custom checking scripts may be included with formats so that special checking can be configured for Required fields and Reference Values, Conditional checking (if this field is X, then that field should be Y), Other special or custom required data reviews QC recovery checking, and other advanced capabilities. EDP can check multiple EDD format tables simultaneously.

EDP also:

- Allows end user to use XML to create new EDDs.
- User Login/identification, and Audit trail capable.
- Generates error reports including row number, error, value.
- Screens data against required limits, with different regulatory limits per location.
- Uploads data submission from user, via email, ftp, or portal. Multi-Channel
- Web Enabled to automate EDD processing for high volume operations.
- Optionally uploads data into defined

Matrix spikes, Duplicate % Recovery and RPD

Lab control samples

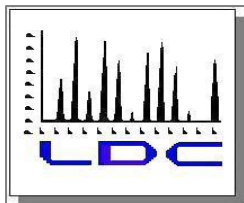
Surrogate % Recovery

Method blanks & Duplicates

Holding times

Reporting Limits

Automated Data Review (ADR) by LDC



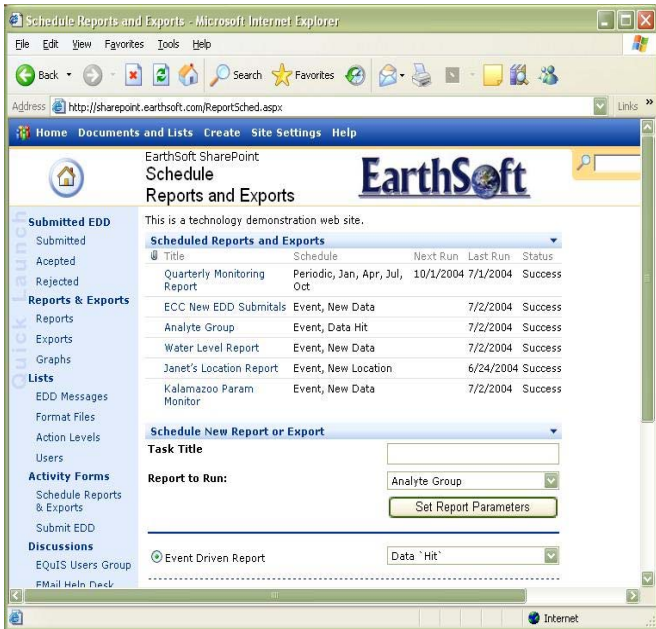
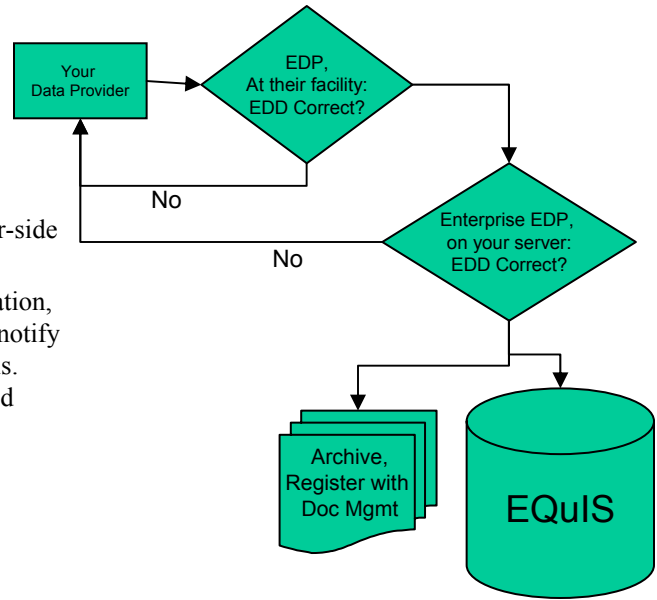
Automated Data Review (ADR)

is a powerful, unique module from Laboratory Data Consultants. Supporting data validation activities, ADR enables EQuIS users to flag and report data on precision and accuracy, holding times, surrogate recoveries, and other analytical measures of data quality.

EQUS 5 Power on the Web

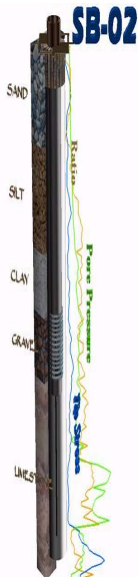
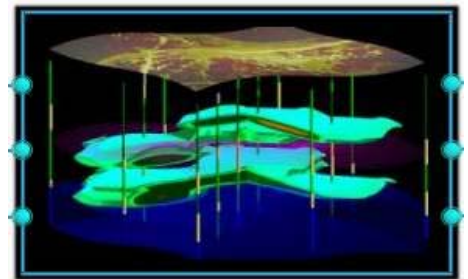
Enterprise EDP

is a web enabled, server-side web part to support Workflow Automation. Organizations receiving thousands of EDDs a month can now automate the checking, registration, and loading of these submissions. Web portals or emails are used to notify the submitter of the system acceptance or rejection of data submittals. EQUS users can be notified in real-time of attempted, completed, and rejected data submissions.



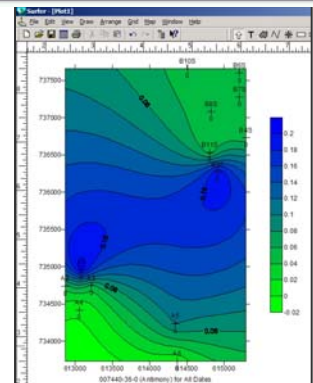
Environmental Information Agents (EIA)

are 'Push' reports for the automation of report and export delivery to the many 'Casual Users' of data in large organizations. EIA can be implemented to generate set reports on set calendar dates, or from trigger events such as new locations, new data submissions, or new 'hits'. Real Time 'Data Discovery' is now possible for hundreds of users in organizations that previously had to depend on a few 'data czars'. EIA supports logic such as 'if I have new Arsenic hits on any of my 15 sites, automatically update and email me new Arsenic contours.'



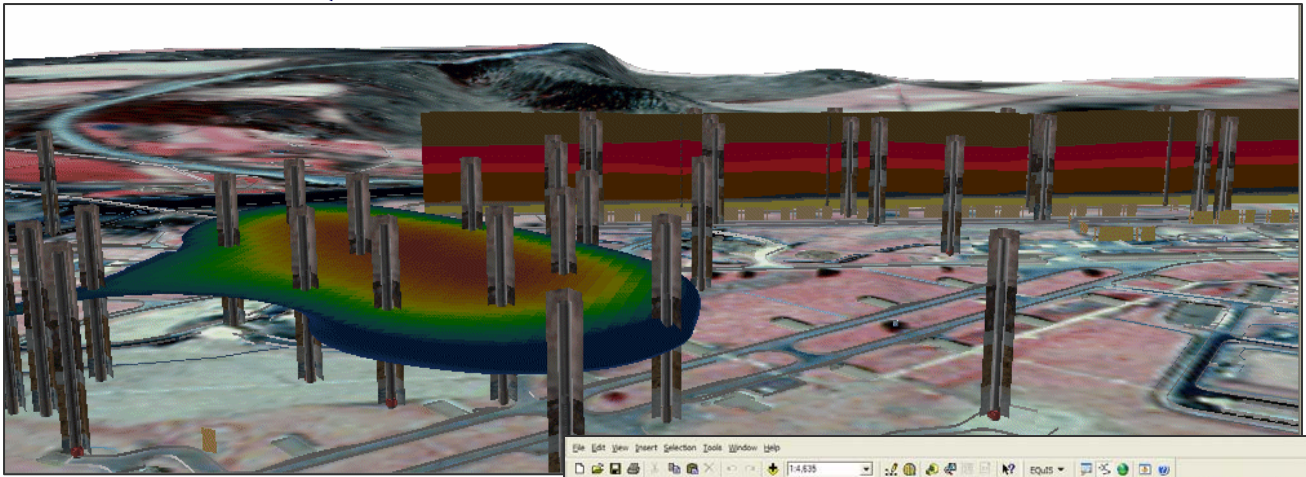
EZView

provides thin client, web enabled, data mining and reporting capability. This web part consists of two major components, Build Report and Pick List. Build report enables your users to build simple queries and exports, anywhere in the world, from a browser. Pick List allows Casual Users to just select reports and exports from previously built ones.



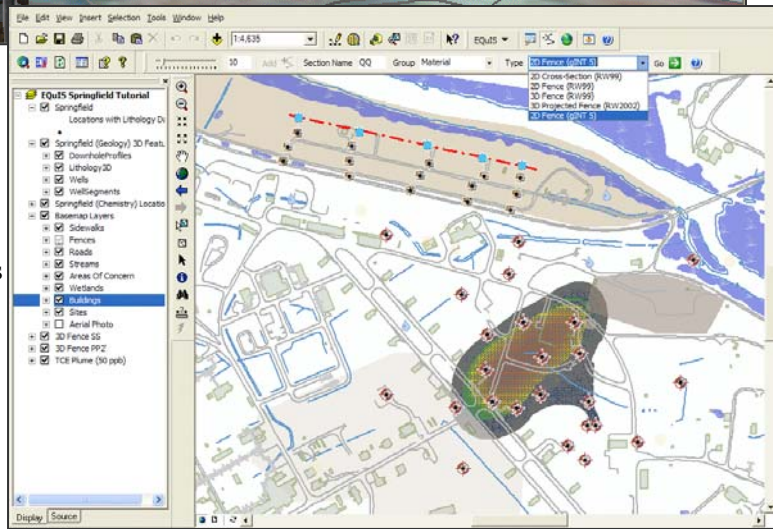
For more info email info@earthsoft.com, visit www.earthsoft.com, or call 978-369-2201.

EQuIS 5 Extensions



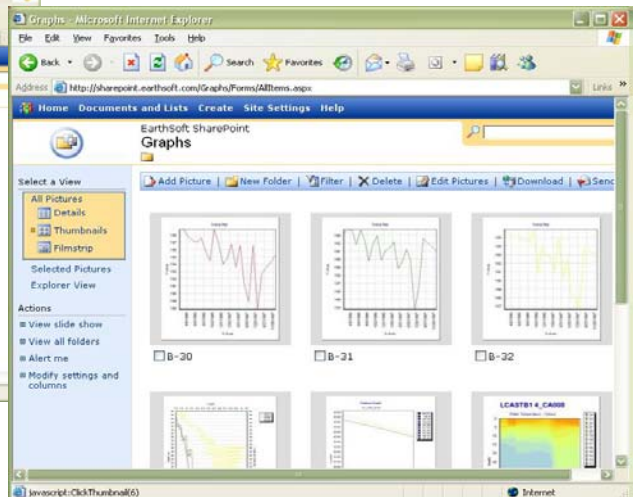
EQuIS 5 for ArcGIS

is the latest in integration of ESRI GIS interfaces to EQuIS data warehouses. ArcGIS users can build queries and label GIS coverages to easily communicate the status of the site to others. The analytical powers of GIS can be combined with EQuIS to provide the most advanced subsurface visualization for environmental data in the world.



SharePoint Integration

allows EQuIS users to register both incoming EDDs and reports and exports with the Microsoft SharePoint document management system. Version management and Change and Configuration Control enables large organizations to better manage the many documents, graphs, graphics and files associated with a site.



For more info email info@earthsoft.com, visit www.earthsoft.com, or call 978-369-2201.